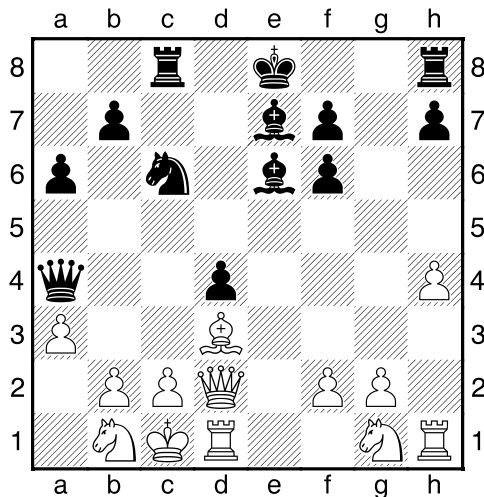


2021 ACTJCL Summer Swiss

Round 5 31st January 2021

Beare,Nick (1621) - Litchfield,Frederick (2081) D00
ACTJCL Sunday Summer Tournament Canberra AUS (5),
07.02.2021

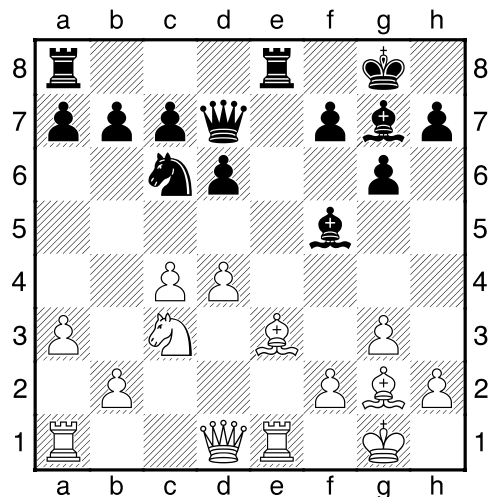
1.d4 d5 2.♘c3 ♘f6 3.♙f4 a6 4.e3 c5 5.dxc5 ♘c6
More accurate than 5 ... e6 which was played in round 3
by Press against Beare
6.a3
6.♘f3 e6 7.♘a4 would lead back to Beare v Press
6...e5 7.♙g5 d4
Black is adapting an aggressive strategy of taking space
in the centre.
8.exd4 exd4 9.♖e2+
9.♘e4 ♙c7 10.♙xf6 gxf6 11.♙d3±
9...♙e6 10.0-0-0 ♙xc5 11.♘e4 ♙e7 12.h4 ♖d5
12...♘xc4 13.♖xc4 ♙xg5+ 14.hxg5 ♖xg5+ 15.f4 ♖d5
looks to win a pawn, but Black is only slightly better after
16.♖xd5 ♙xd5 17.♘e2 0-0-0 18.♘xd4 ♙xg2! 19.♙xg2
♖xd4 20.♖xd4 ♘xd4 with a tricky ending in store
13.♙xf6 gxf6!
13...♙xf6 14.♘xf6+ gxf6=
14.♘c3
14.c4 ♖a5 15.♖d2≠
14...♖a5 15.♘b1
15.♘e4 ♙xa3! leads to a winning attack 16.bxa3
(16.♘xf6+ ♘e7 17.♘d5+ ♖xd5 18.bxa3 ♖a2+
followed by Rac8) 16...♖xa3+ 17.♘d2 (17.♘b1 ♙a2+
18.♘a1 ♙c4+--+) 17...0-0-0 18.♘c1 f5 19.♘g3 ♖he8-+
15...♖c8
15...0-0-0 is also good
16.♖d2 ♖a4 17.♙d3?



17...♘a5!
Bringing the game to an abrupt halt. Nb3# is the threat
and can only be avoided by allowing the queen to be
captured after the knight check. **0-1**

Amer,Abdulmalk (1847) - Press,Shaun P (1951) A20
ACTJCL Sunday Summer Tournament Canberra AUS (5),
07.02.2021

1.c4 e5 2.g3 ♘c6 3.♙g2 g6 4.e3 ♙g7 5.♘e2 d6
6.0-0 ♘ge7
Black is playing a Reversed Closed Sicilian against the
English. The advantage in choosing White openings as
Black defences is that you only have to remember half the
theory. The drawback is that you are a tempo down,
which may be enough to refute some lines.
7.♘bc3 0-0 8.d4
While this is logical, it does give Black some play against
the pawn centre.
8...exd4 9.♘xd4
9.exd4 ♘f5 10.♙c3 ♖c8 11.♖d2 ♙d7=
9...♘xd4 10.exd4 ♘c6
A more flexible square for the knight.
10...♘f5 is the other square for the knight although White
can then choose a sharp line, or a solid one. 11.♘e4 is the
sharp line. (11.d5 ♖f6 12.♖e1 ♖d4 13.♙f4 is solid, as
long as Black does not then grab the c pawn 13...♖xc4?
14.♖c4 ♖a6 15.♙f1 b5 (15...♖b6 16.♘a4 ♖a5
17.b4+–) 16.♙xb5±) 11...♘xd4 12.♙g5 f6 (12...♖d7
13.♘f6+ ♙xf6 14.♙xf6 ♘c6 15.♙c3 with the two
bishops, lead in development, and control of the dark
squares as compensation for the pawn sacrifice.)
13.♖xd4 fxg5 14.♖d5+ ♘h8 15.♘g5 ♖f6=
11.♙e3 ♙f5 12.a3 ♖d7 13.♖e1 ♖fe8
I was considering 13...♘a5 but rejected it on the grounds
that it may lead to a worse position if I do not manage to
win material 14.b3 c5 15.♘d5±



14.♖d2?
White was concerned about the threat of Nxd4 which
wins a pawn, but this was the wrong response.
14.♘e2 happily defend everything.
14...♘a5
attacking the pawn on c4 and threatening Nb3
15.♖d1 ♘xc4 16.♖b3

16.♔xb7 ♖ab8 17.♙g2 (17.♜f3 ♘a5 18.♙e4 ♙g4 19.♜f4 ♜xb2?) 17...♘xb2-+

16...♘xe3 17.fxe3 c6

Black is now up a pawn, and still has the backward e pawn as a target.

18.a4 ♖e7 19.♗c4 ♖ae8 20.a5? ♜xe3 21.♞xe3 ♞xe3 22.a6 ♙d3 23.axb7

playing for tricks.

23.♞b4 ♙xa6-+

23...♞xb7 24.♞xc6 ♞xc6?

I had seen this trade of queens 4 moves before, but if I had thought a bit more I would have found an almost instant win.

24...♙xd4! I did consider this briefly, but decided that getting queens off the board was more prudent 25.♔h1 and I stopped analysing here (25.♞xb7 ♖e1#) 25...♞xb2! 26.♞a4 ♞xc3 ends the game

25.♙xc6 ♙xd4 26.♔g2 ♙c4

I had a long think over this move, assessing the likely endings it would lead to. While from this point on I was always better, some of these endings still take more work than others!

27.♞a4 ♙xc3 28.♞xc4

White prefers a rook and bishop of opposite colours ending, despite now being 3 pawns down.

28.bxc3 ♜xc3 29.♞xa7 ♙f1+ 30.♔xf1 ♞xc6 was one alternative I envisaged.

28...♙xb2 29.♙d5 ♖e5 30.♞c8+ ♔g7

White is trying to draw this ending by attacking the f pawn, and seeing if can capture either the d or a pawns.

31.♙b3 ♖e7

Safety first.

32.♞d8 ♙a3 33.♙d5 ♖e5 34.♙b3 ♖b5 35.♙c4 ♖b2+ 36.♔f3 ♙c5 37.♞d7 ♖f2+

37...♞xh2 38.♞xf7+ ♔h6 solves the problem of the f pawn by simply giving it away!

38.♔e4 a5 39.♙b3 ♔f8 40.♔d3 h5

Black's pieces are better placed, so now is the time to create more passed pawns.

41.♞b7 g5 42.h4

42.♞b5 ♞xh2 43.♞xa5 ♞h3-+

42...g4 43.♙d5 a4 44.♞b8+ ♔g7 45.♞e8 a3 46.♞e1

Heading for an opposite colored bishop ending is no help.

46.♞c2 ♞xc2 47.♔xe2 ♔f6-+

46...♖f5 47.♔c4 ♙f2 48.♖f1 a2 49.♙e4 ♖f6

49...d5+ 50.♙xd5 ♙d4 51.♔xd4 ♞xf1 52.♙xa2-+ was a line I saw moments after I had retreated the rook; 49...♞c5 50.♔d3 ♙xg3-+; 49...♞a5 50.♞a1 d5+ 51.♙xd5 ♞c5+ 52.♔b3 ♞xd5 is also good enough

50.♞a1 ♙xg3 51.♞xa2 ♙xh4

Having captured more pawns, I figured that I could even play RxB if needed.

52.♞h2 ♖f4 53.♔d3

53.♞xh4 ♞xe4+ 54.♔d5 ♞c5+ 55.♔xd6 ♖g5 56.♞h1 g3 57.♖g1 g2-+

53...g3 54.♞h1 ♔f6 55.♙g2 ♔g5 56.♔e3 ♖f2 57.♙f3 f5 58.♞d1 f4+ 59.♔e4 g2 0-1

Ho,Lachlan (1590) - de Noskowski,Adrian (1813) B06
ACTJCL Sunday Summer Tournament Canberra AUS (5),
07.02.2021

1.e4 g6 2.d4 ♙g7 3.♘c3 c5 4.♙e3 ♞a5 5.♞d2 ♔f6 6.f3

6.dxc5 ♘c6 7.f3 0-0 and Black will have difficulty in recovering the pawn.

6...cxd4 7.♙xd4 ♘c6 8.♙e3 0-0 9.♙c4 d6 10.♘ge2 ♙d7 11.♙b3 ♖fc8 12.h4 ♘e5 13.h5 ♘c4

I think Black could also take the pawn here. 13...♘xh5 14.0-0-0 (14.g4?? ♘xf3-+-) 14...♘f6 15.♙h6 ♙h8?

14.♙xc4 ♖xc4 15.hxg6 fxg6 16.♙h6 ♖f8

16...♙h8 is a standard defensive idea

17.♙xg7

17.0-0-0± As one of White's eventual problems was not having enough pieces to continue the attack, then castling should have been a priority.

17...♔xg7 18.♞h6+ ♔g8 19.♔f1?

19.0-0-0 should even have been played now

19...♖f7? 20.♔g1 ♞c5+

20...♞b6+ 21.♔h2 d5! 22.exd5 g5! traps the queen!

21.♔h2 ♞h5+?

21...d5?

22.♞xh5 ♘xh5 23.♞ad1 ♔f6 24.♞d4 ♖c7

An equal ending has now been reached.

25.♞hd1 b5 26.♞1d2 ♖f8 27.♘d5 ♘xd5 28.exd5 a5

29.c3 ♙f5 30.♘f4 g5 31.♘h3 h6 32.♘f2 a4 33.a3

♙b1 34.♘g4 ♔g7 35.♞b4 ♖c5 36.♞bd4 ♖fc8

37.♘e3 ♔f6 38.♔g3 ♔g6 ½-½

Karthik,Shriya (1213) - Tisserand,Nathalie (1632) D30
ACTJCL Sunday Summer Tournament Canberra AUS (5),
07.02.2021

1.♘f3 d5 2.c4 c6 3.e3 ♘f6 4.d4 e6 5.♘bd2 ♙d6

6.♙e2 ♘bd7 7.0-0 0-0 8.b3 e5 9.dxe5 ♘xe5

10.♙b2 ♖e8 11.♞e1 ♙f5 12.♘h4 ♙e6

12...♙d3 13.♘hf3 ♘xf3+ 14.♘xf3 dxc4 15.♙xf6 ♞xf6

16.♙xd3 cxd3 17.♞xd3=

13.♞c2 g6?!

Covering the f5 square, but weakening the squares around the king.

14.♙d3?

Not the best reply

14.f4 ♘ed7 15.f5 gxf5 (15...♘e4 16.♘e4 dxe4 17.fxe6

♞xh4 18.exf7+ (18.exd7? ♞xh2+ 19.♔f1 ♖e6! 20.c5

♞h1+ 21.♔f2 ♞h4+ 22.♔f1 ♙g3 23.♙c4 ♖e7 is very

complicated, although Black has good chances to win from here) 18...♔xf7 19.♖f1+ ♔g8 20.g3 ♙xg3 21.hxg3

♞xg3+ is a draw) 16.♘xf5±

14...♘xd3 15.♞xd3 ♘g4 16.♘hf3 ♙f5 17.♞d4 ♘e5

18.e4

Exchanging on d5 first is better 18.cxd5 cxd5 19.e4 dxe4

20.♘e4 ♙xe4 21.♞xe4 f6 22.♞d5+±

18...dxe4 19.♘e4 ♘xf3+?

19...♙xe4 20.♞xe4 f6= and White cannot check on d5

20.gxf3 ♙e5 21.♘f6+?

21.♞xd8 wins material 21...♞axd8 22.♙xe5 ♞xe5

23.♘f6+ ♔g7 24.♞xe5 ♔xf6 25.♞ac1±

21...♞xf6 22.♞xe5 ♞xe5 23.♞xe5 ♞xe5 24.♙xe5

♞d8 25.♞e1 ♔f8

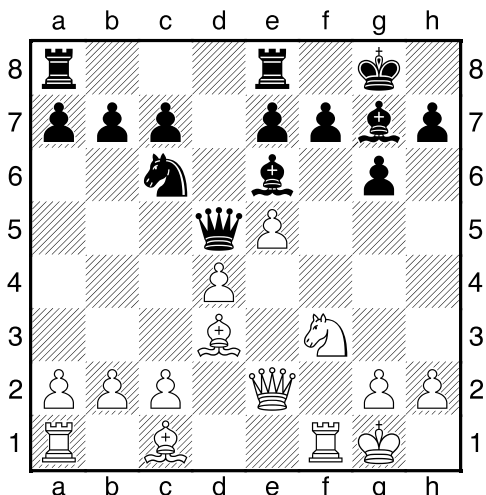
Black has slightly better winning chances due to the doubled White f pawns, but with careful play White can (and did) hold.

25...♞d2 26.♙c3 ♞xa2?? 27.♞c8#
26.a3 ♙h3 27.f4 f5 28.b4 ♗f7 29.♙c3 ♞d3 30.♞e3 ♞d1+ 31.♞e1 ♞xe1+ 32.♙xe1= ♙g4 33.a4 ♙e2 34.c5 ♙d1 35.a5 ♙f3 36.♙d2 ♗e6 37.h4 ♗d5 38.♗h2 ♗c4 39.♗g3 ♙d1 40.♗g2 ♗d3 41.♙e1 ♗e2 42.♙c3 ♙b3 43.♗g3 ♙d5 44.♙b2 ♗d2 45.♙d4 ♗d3 46.♙e3 ♗c4 47.♙d2 ♗b5 48.♙e1 b6 49.axb6 axb6 50.cxb6 ♗xb6 51.♙d2 ♗c7 52.♙c3 ♗d7 53.♙b2 ♗e6 54.♙c3 ♙e4 55.♙b2 ♗f7 56.♙c3 h5 57.♙b2 ♗e6 58.♙c3 ♗d5 59.♙d2 ♗c4 60.♙e1 ♗d3 61.f3 ♙d5 62.♙f2 ♗e2 63.♙c5 ♙xf3 64.♙e7 ♙d5 65.♙c5 ♗d3 66.♙e7 ♙e4 ½-½

Archer,Saffron (1709) - Milne,Erin (1139) B09

ACTJCL Sunday Summer Tournament Canberra AUS (5),
 07.02.2021

1.e4 d6 2.d4 ♗f6 3.♗c3 g6 4.f4 ♙g7 5.♙d3 0-0 6.♗f3 ♞e8 7.e5 dxe5 8.fxe5 ♗d5 9.0-0 ♗c6 10.♞e2 10.♗xd5 ♞xd5 11.c3 gives White an easy position to play 10...♙e6 11.♗xd5 ♞xd5?? 11...♙xd5±



12.c4

winning material

12...♗xd4

12...♞d7 13.d5 ♞ed8 14.♙c4 ♗xe5 15.dxc6 ♞xe6+-

13.cxd5 ♗xe2+ 14.♙xe2 ♙xd5

and White has won a piece for 2 pawns.

15.♙f4 ♞ad8 16.♞ac1 c6 17.b3 ♙e6 18.♞fd1 f6 19.♙c4 ♙xc4 20.bxc4 ♗f7 21.♗f2 ♞f8 22.♗e1 ♗e6 23.exf6 exf6 24.♞xd8 ♞xd8 25.♞d1 ♞e8 26.♗f2 ♞c8 27.♗d4+ ♗f7 28.♗b3 ♗e8 29.♗c5 b6 30.♗e6 ♙h8 31.♞d6 ♗e7 32.♗d4 c5 33.♞c6 ♞a8 34.♞c7+ ♗f8 35.♗c6 f5 36.♞xh7 ♙f6 37.♗e5 ♗g8 38.♞b7 ♙xe5 39.♙xe5 ♗f8 40.♞b8+ ♞xb8 41.♙xb8 a6 42.♙a7 b5 43.cxb5 axb5 44.♙xc5+ ♗f7 45.♗f3 ♗e6 46.♗f4

♗f6 47.h4 ♗f7 48.♗e5 ♗g7 49.♙e7 ♗f7 50.♙g5 ♗g7 51.♗d5 b4 52.♗c4 1-0

Forace, Lee (1648) - Cheng, Larry (609) B32

ACTJCL Sunday Summer Tournament Canberra AUS (5),
 07.02.2021

1.e4 c5 2.♗f3 ♗c6 3.d4 cxd4 4.♗xd4 d6 5.f4 ♗f6 6.♗c3 ♙g4 7.♗f3 g6 8.h3 ♙d7

Black can save a little time by giving up the two bishops with 8...♙xf3 9.♞xf3 ♙g7 10.♙d2 ♗d4 11.♞d3 ♗d7=

9.♙d3 ♙g7 10.0-0

10.e5 Usually castling is sensible here, but the pawn push gives White a clear advantage 10...dxc5 (10...♗g8 11.♞e2±) 11.fxc5 ♗g8 12.♙f4±

10...0-0 11.♞e1 ♞b6+ 12.♗h1

12.♙c3 ♞xb2 13.♞b1 ♞a3 14.e5 dxe5 15.fxe5 ♗h5 16.♞b3 ♞a5 17.g4 is a sharp line where Black gives up a piece expose White's king. 17...♗xe5 18.♗xe5 ♞xe5 19.gxh5 ♞xh5

12...♗b4 13.♙e3 ♗xd3 14.cxd3 ♞xb2 15.♞b1 ♞a3 16.e5!

White has the centre, so attacking the king is the next logical step.

16.♞xb7 ♞fb8 17.♞b1 ♞xb7 18.♞xb7 ♞d8 19.♞c1= although I would rather be White here.

16...dxe5 17.fxe5 ♗e8

17...♗h5 18.♞b3 ♞a5 19.g4 ♙xc5 20.♗xe5 ♞xe5 21.gxh5 is similar to the line given at move 12, where Black sacrifices a piece to expose the White king. Engin analysis gives this as equal, although this is based on Black having 3 pawns for the piece.

18.♗e4

18.♗d5! ♙c6 19.♞b3 ♞xa2 20.♗xe7+ ♗h8 21.♗d2±

18...♞xd3?

Greedy!

18...b6!± covers the critical c5 square, denying White a place for the bishop.

19.♙c5?

Missing the immediate win, White gives Black a chance to save the game

19.♗c5 ♞f5 20.g4+- wins the bishop and rook

19...♙f5 20.♗fg5 ♗c7

20...h6 21.♞d1 ♞a6 22.♙xe7 hxg5 23.♗xg5 f6 24.♙xf8 ♙xf8 25.exf6 ♗xf6 and after the mass of exchanges, Black has two bishops for a rook.

21.♞d1 ♞c4

A risky square for the queen.

22.♙xe7

22.♞h4! h6 23.♗f6+! exf6 (23...♙xf6 24.♞xc4 ♙xg5+-) 24.♞xc4+-

22...♞fe8 23.♗f6+

23.♞h4 wins as before.

23...♙xf6 24.♙xf6 ♞xa2 25.♞xf5 gxf5 26.♞h4 1-0

Sanchez,Hunter (609) - Cunningham,Campbell (1373) D15

ACTJCL Sunday Summer Tournament Canberra AUS (5),
07.02.2021

1.d4 d5 2.c4 c6 3.♘c3 ♘f6 4.♘f3 dxc4 5.e4

5.a4 preventing b5 is also theory; 5.e3 b5 6.a4 b4 is similar to the game

5...b5 6.a4

6.♙e2 b4 7.e5 bxc3 8.exf6 cxb2 9.♙xb2 exf6 has black ahead by 2 pawns, but White can start winning them back quickly.

6...b4 7.♘a2 a5

7...♘xc4 8.♙xc4 a5 9.0-0 is a position where White had sacrificed a pawn for a big lead in development.

8.e5 ♘d5 9.♙xc4 e6 10.0-0 ♘d7 11.♙d3?!

White is taking a risk by putting the queen on the same diagonal as the rook. Of then the future consequences of moves like this are not taken into account until far too late.

11.♙g5 Continuing to develop is better

11...♘5b6 12.♙e3?

12.♙d1=

12...♘xc4 13.♙xc4 ♙a6 14.♙xc6 ♙xf1 15.♙xf1 ♙c8

It isn't just that White has lost the exchange, but that Black can now complete his development by kicking the queen

16.♙e4 ♙e7 17.♙d1 ♘b6 18.b3 ♘d5 19.♙d3 0-0

20.♘c1 ♙c3 21.♙d2 ♙c7 22.♘e1 ♙c8 23.♘ed3 ♙c2

24.♙e1 ♙d8 25.♘c5 ♙c6 26.♘e2 ♙c8 27.♙c1

♘xe3+ 28.fxe3 ♙xc1 29.♙xc1 ♙xc5 30.dxc5 ♙xc5

31.♙d2 ♙xe5

White has no play here, and Black wins easily.

32.♙d4 ♙d5 33.♙b6 ♙d8 34.♙c6 ♙d3 35.♘f4 ♙xe3 0-1

Huang,Charles (902) - Yang,Minchen (1039) B35

ACTJCL Sunday Summer Tournament Canberra AUS (5),
07.02.2021

1.e4 c5 2.♘f3 g6 3.d4 cxd4 4.♘xd4 ♘c6 5.♙e3 ♙g7 6.♘c3 ♘f6?!

Black is still playing an Accelerated Dragon, but this does have some risk

6...d6 preventing the e5 push is safer, and invites a transposition back to the Dragon proper.

7.♙c4

7.♘xc6 bxc6 (7...dxc6 8.♙xd8+ ♘xd8 9.0-0-0+±)

8.e5 ♘g8 9.f4 gives White more space

7...0-0 8.0-0 d6

8...♘xe4 is a trick which gives Black an equal position.

9.♘xe4 d5 10.♘xc6 bxc6 11.♙d3 dxe4 12.♙xc4 ♙b8

13.♙xd8 ♙xd8 14.♙fd1= ♙xd1+ 15.♙xd1 ♙xb2 16.♙xa7

♙a8 17.♙c5 ♙xa2 18.♙xc7 ♘g7

9.♘xc6 bxc6 10.♙e2 d5 11.exd5 cxd5 12.♙ad1 e6

13.♙b5 a6 14.♙c6 ♙b8 15.♙c5

White's last few moves were based on winning the exchange, but it turns out that Black is better after this happens.

15.♙a4 ♘h5 16.♙b3

15...♙xb2 16.♙xf8 ♙xf8

16...♙xf8 is better, as the Queen can get to the queenside quickly, while the bishop remains on the important a1-h8 diagonal.

17.♙a4 ♙a5 18.♙f3 ♙b4

18...♘d7 19.♙b3 ♘c5 as the rook can always escape after a timely Nxb3

19.♙d3 ♙xc3

19...♘d7 gives Black a continuing edge 20.♙e3 ♙c5

21.♙d2 ♙b7 and although White has rook for bishop and pawn, Black has the more active position.

20.♙xc3 ♙xa4?

20...♘g7 21.♙b3 is better than the main game, but White is now in a position to exploit the material advantage.

21.♙xf6 ♙d7

21...♙xc2 22.♙d8+ ♘g7 23.♙xc8+-

22.♙f3 ♙e8

22...♙xc2 23.♙xf7+ ♘h8 24.♙f8#; 22...♙b8 23.♙xf7+ ♘h8 24.♙h3! h5 25.♙xg6+-

23.♙xb2

White is now ahead 2 rook for a bishop

23...♙b5 24.♙c3 d4 25.♙c8+ ♘g7 26.♙d1 e5 27.f4

f6 28.fxe5 fxe5 29.♙c7+ ♘f8 30.♙b3 ♙xb3 31.axb3

h5 32.♙e1 1-0

Dunn,Paul (1396) - Banerjea,Siddharth (1063) D02

ACTJCL Sunday Summer Tournament Canberra AUS (5),
07.02.2021

Press,Shaun

1.d4 d5 2.♘f3 ♘c6 3.g3 ♘f6 4.♙g2 ♙f5 5.0-0 e6

6.c4 dxc4 7.♘c3 ♙b4?! 8.a3

8.♘e5 is the standard idea in these positions 8...0-0

(8...♘xe5 9.♙a4+ c6 10.♙xb4± ♙xd4 (10...♘ed7

11.♙xb7 0-0 12.♙xc6+-) 11.♙f4 ♘g6 12.♙c7!)

9.♘xc6 bxc6 10.♙a4 (10.♙xc6 ♙b8 11.♙g2=) 10...♙b8

11.a3 ♙xc3 12.bxc3±

8...♙xc3 9.bxc3 0-0 10.♙e1 ♙e4!

A suprisingly strong move.

11.♙a4

11.♙g5 b5

11...♙d5?!

11...♙d5!

12.♘d2

12.♙g5!

12...♙xg2 13.♙xg2 e5

Another good move from Black.

14.e3?

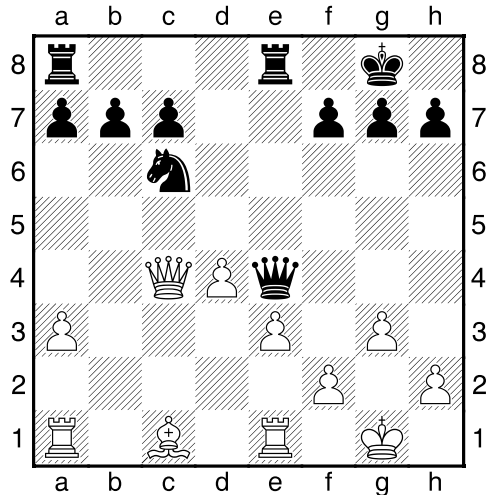
White now loses control of the light squares around his king

14...♙d5+

14...exd4 15.exd4 ♙d5+ 16.♘f3 ♘c4 sets up a strong attack for Black

15.♘g1 ♘e4 16.♘xe4 ♙xe4 17.♙xc4 exd4 18.cxd4 ♙fe8

18...♘e5! is the faster way to do this. Nf3 is next



19. ♖e2?

19.f3 is the only defence. 19... ♗xf3 20. ♖f1 ♗h5 21. ♖b1 with good play for the pawn.

19... ♗xd4 20. ♗d1 ♗f3+ 21. ♖f1 ♗xh2+ 22. ♖e2 ♗f3+ 23. ♖d2 ♖ad8+ 0-1

Pearce, Tim (1752) - Extross, Eshaan (1294) D35

ACTJCL Sunday Summer Tournament Canberra AUS (5), 07.02.2021

1.d4 ♗f6 2.c4 e6 3. ♗c3 d5 4.cxd5 exd5 5. ♗g5 h6 6. ♗h4 ♗e6 7.e3 a6 8. ♗d3 ♗c6 9. ♖c1 ♗e7 10. ♗ge2 ♗b4?

An unnecessary move that only helps White. The bishop move away, and then White will gain time by kicking the knight

11. ♗b1 0-0 12.a3 ♗c6 13. ♗c2

13. ♗f4 also causes problems for Black, as long as White gets the tactics right. 13...g5 14. ♗xe6 fxe6 15. ♗g3± and White is well placed to attack on the kingside with moves like h4.

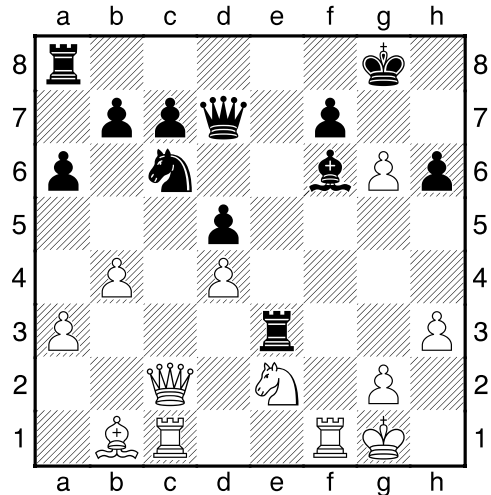
13...g6 14. ♗g3?! ♖e8

14...g5 looks tempting but White wins after 15. ♗h5! ♗e4 (15... ♗xh5?? 16. ♗h7#; 15...gxf4?? 16. ♗xf6+ ♗xf6 17. ♗h7#) 16.f3 f5 17.fxe4 fxe4 18. ♗f2+-

15. ♗xf6 ♗xf6 16. ♗ce2 ♗d7

16...h5 actually causes difficulties for White. The knight on h4 is suddenly short of decent squares and h4 is a real threat. 17.h3 (17.0-0 h4 18. ♗h1 h3#) 17...h4 18. ♗f1 ♗xd4!! 19.exd4 ♗xd4 20. ♗xd4 ♗f5+-

17.0-0 ♗g4 18.h3 ♗xe2 19. ♗xe2 ♗g5 20.b4 ♖e6 21.f4 ♗f6 22.f5 ♖xe3



23.fxg6

White has generated an attack that looks scarier than it is.

23... ♗e7??

23... ♗xd4 defends 24. ♗xd4 (24.gxf7+ ♗xf7 25. ♗xd4 ♗xd4! 26. ♖xf7 ♖e2+ 27. ♖f1 ♖xc2 28. ♖xc2 ♖xf7 29. ♖xc7+ ♖e6=) 24... ♗xd4 25. ♖h1 (25.gxf7+ ♗xf7!) 25... ♖c3 26. ♗d2 ♖xc1 27. ♗xc1 fxg6 28. ♗xh6 ♗g7 and although White can win the g pawn, a level ending has been reached.

24.gxf7+ ♗xf7 25. ♖xf6! ♖xe2

25... ♗xf6 26. ♗h7+ ♖f8 27. ♖f1+-

26. ♖g6+ ♖h8 27. ♗xe2 ♗xd4 28. ♗e5+ ♖h7 29. ♖g7+ 1-0

Albert, Max (1200) - Vels, Philip (1404) C41

ACTJCL Sunday Summer Tournament Canberra AUS (5), 07.02.2021

1.e4 e5 2. ♗f3 d6 3. ♗c3 ♗f6 4.d4 exd4 5. ♗xd4 ♗c6 6. ♗b5 ♗d7 7. ♗xc6 ♗xc6 8. ♗g5 ♗e7 9.0-0 0-0 10. ♖fe1 ♖e8 11. ♖ad1 h6 12. ♗h4 ♗d7 13. ♗g3

13. ♗xc7 ♗xc7=

13... ♗f6 14. ♗c4 ♗xc3 15.bxc3

15. ♗xc3 ♗xc4 16. ♗d4 ♗c5 17.f3 ♗g6 gives white some play for the pawn.

15... ♗f6 16. ♗d4 ♗b6 17. ♗d3 ♗d7

17... ♗a4! 18. ♖b1 ♗c5 19. ♖f3 ♗xc4 20. ♗xf6 gxf6#

18. ♖e3 c6 19. ♖de1

19. ♗b3 d5 20. ♗c5!

19... ♖ad8 20.e5

White gets carried away with visions of a kingside attack.

20...dxe5 21. ♗xe5 ♗g6 22. ♖g3??

This looks like a strong move, but with the centre still contested, Black has a strong counter.

22... ♗xd3 23. ♖xg7+

23.cxd3 is no longer good either, due to the pin on the Bishop 23...f6 24. ♗f3 fxe5+-

23... ♖f8

I suspect White stopped calculating around here, missing Black's 24th move

24.cxd3 ♖xe5 25.♖xf7+ ♜xf7 26.♖xe5+- ♖e8 27.f4
 ♖xe5 28.fxe5 ♗e6 29.c4 ♜d7 30.♜f3 ♗g4 31.d4
 ♗xf3 32.gxf3 ♜b6 33.c5 ♜d5 34.♜f2 ♜e6 35.♜g3
 ♜f5 36.a4 ♜c3 37.♜h4 ♜xa4 38.f4 ♜c3 39.♜h5 a5
 40.♜xh6 ♜d5 41.♜g7 ♜xf4 42.♜f7 a4 43.h4 a3
 44.h5 ♜xh5 45.e6 ♜f6 46.e7 a2 47.d5 cxd5 48.c6
 bxc6 49.e8 ♜ ♜xe8 50.♜xe8 a1 ♖ 51.♜d7 c5
 0-1

Liang,Joshua (1022) - Mathur,Rohitansh (1027) C29
 ACTJCL Sunday Summer Tournament Canberra AUS (5),
 07.02.2021

1.e4 e5 2.♜c3 ♜f6 3.f4 exf4? 4.e5 ♜g8 5.♜f3 ♜c6
 6.d4 f6

Weakening the kingside like this is not a good idea.

7.♗xf4 ♗b4 8.♗c4 d5 9.exd6 cxd6 10.0-0

10.♗xg8 ♖xg8 11.0-0 to keep the Black king in the centre
 is another way to play this

10...♜ge7 11.a3

11.♜d5 ♜xd5 12.♗xd5 ♜e7 13.♖e2+- threatening Qb5+

11...d5 12.axb4 dxc4 13.d5 ♜xb4 14.♖e1

14.d6! ♜ec6 15.♖e2+ ♜f8 16.♖xc4+-

14...0-0 15.d6 ♜g6 16.♜d5?

16.♗g3±

16...♜xd5?

16...♜xf4 17.♜xf4 ♗f5=

17.♖xd5+ ♜h8 18.♖xc4 ♗f5 19.♜d4 ♖c8?

Black is relying on direct threats, which don't actually
 help his positions. In this case the queen just moves to a
 better square.

20.♖b4 ♗xc2?

Overlooking the knight fork.

20...♗d7 21.♖xa7 ♜xf4 22.♖xb7!+-

21.♜e6 ♖b6+ 22.♖xb6 axb6 23.d7!

Stronger than 23.♜xf8 ♜xf8

23...♖cd8 24.♜xd8 ♖xd8 25.♖e8+ ♜f8 26.♖a8

26.♖xd8 ♜g8 27.♖xf8+ ♜xf8 28.d8 ♖+

26...♖xa8 27.♖xa8 ♜g8 28.d8 ♖ h6 29.♖xf8+ ♜h7

30.♖f7 ♗g6 31.♖h8+

31.♖g8# was quicker.

31...♜xh8 32.♖xg6 ♜g8 33.♗xh6 ♜f8 34.♖xg7+

♜e8 35.♖xb7 f5 36.h4 f4 37.♗g7 f3 38.h5 fxg2

39.h6 ♜d8 40.h7 ♜e8 41.h8 ♖#

1-0