

2021 ACTJCL Summer Swiss

Round 3 24th January 2021

Litchfield, Frederick (2081) - Press, Harry (2076) [A58]
ACTJCL Sunday Summer Tournament Canberra AUS (3),
24.01.2021

1.d4 ♖f6 2.c4 c5 3.d5 b5 The Benko Gambit.

4.cxb5 a6 5.bxa6 g6

For long and complicated reasons, the immediate 5...♗xa6 is not considered as good.

6.♖c3 ♗g7

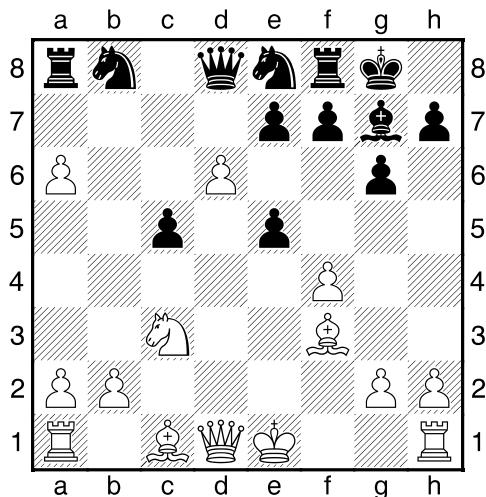
6...♗xa6 7.c4 ♗xf1 8.♗xf1 to stop White from castling is another line

7.e4 0-0 8.e5 ♖e8 9.f4

Black allows White to build up a big centre, in the hope of destroying it later. If White can develop and defend the pawns then Black is in trouble. So Black must strike back quickly.

9...d6 10.♖f3 ♗g4 11.♗e2 ♗xf3 12.♗xf3 dxe5 13.d6?!

13.fxe5 ♗xe5 14.♖c2 ♗xc3+ 15.bxc3 ♖d6± demonstrates Black's strategy, but White now has the bishop pair in an open position.



13...♗xa6 14.dxe7 ♖xe7 15.0-0

At first glance this position looks better for White, based on the a pawn and the bishop pair. However Black has the initiative, which he puts to good use.

15...♖c7 16.♖e2 ♗e6 17.♖d5 ♖xd5 18.♗xd5 ♗d6 19.♗c4 ♖c6 20.♗e3 exf4

20...c4 is an interesting idea. 21.a4 ♖d4 22.♖f2 ♗c8 23.♗h1 ♖f5!± 24.♗xc5 c3! 25.♗xd6 ♖xd6 26.♗xf7+ ♗xf7 27.♖e2 and Black is better, despite the small material deficit.

21.♗xc5 ♖xe2 22.♗e2 ♗d4+ 23.♗xd4 ♖xd4 24.♗c4 g5

Again the passed pawns on the queenside look worrying, but Black has enough play to deal with them.

25.a4 ♗a8 26.b3 ♗b6 27.♗ab1 ♖c2 28.♗bc1 ♖e3 29.♗f3 ♗b4 30.g3 ♖xc4 31.♗xc4 ♗xc4 32.bxc4 ♗xa4 33.gxf4 ♗xc4 34.fxg5

½-½

Amer, Abdulmalk (1847) - Patterson, Miles (1944) [A29]

ACTJCL Sunday Summer Tournament Canberra AUS (3),
24.01.2021

1.c4! e5 2.♖c3 ♖f6 3.g3 ♗b4 4.♗g2 0-0 5.♖f3 ♖c6 6.0-0 e4

The most challenging move, although the pawn on e4 can become a target

7.♖g5 ♗xc3 8.dxc3 ♗e8 9.♖c2 ♖e7 10.♖h3 h6 11.♖f4 d6 12.♖d5 ♖xd5 13.cxd5 ♖b8 14.♗e3 ♗f5 15.c4 b6 16.b4 ♖d7 17.♗fc1 a5 18.a3 axb4 19.axb4 ♖e5

Where to put your rooks can be a very difficult middlegame position. White has a few choices.

20.♗ab1

20.♗xa8 ♗xa8 gives Black the a file; 20.♗a2 might be best 20...♗xa2 (20...♗h7 21.h3 (but not 21.♗ca1? ♖xa1+ 22.♗xa1 ♗xa1+ 23.♗f1 ♗ea8±) 21...♖f6 22.♗d1) 21.♖xa2±

20...♗a3 21.♖d2 ♖e7 22.♗a1 ♗ea8 23.♖b2 ♗xa1 24.♗xa1 ♖e8 25.♗d4 f6 26.e3 ♗f7 27.♖b1 ♗xa1 28.♖xa1 ♖e7 29.♖a7 ♖d8 30.g4 ♗xg4 31.♗xe4 f5 32.♗g2 ♗e2 33.♖a2 ♗h5 34.♖a1 ♖g5 35.f4 ♖g4 36.♖b2 ♖d1+ 37.♗f2 ♖f6 38.♗xf6 gxf6 39.h3 ♖a4 40.♖d2

40.♖b1 ♗g6 41.♗f1 restricts the Black bishop, giving White better chances in this ending

40...♗d1 41.♗f1 ♖c2 42.♗e1 ♖xd2+ 43.♗xd2 ♗f3 44.♗c3

44.♗e2 ♗g2 (44...♗xe2 45.♗xe2 ♗g6 46.♗f3 ♗h5 47.♗g3 ♗g6 also holds, but why take the risk.) 45.♗h5+ ♗g7 46.h4 b5! 47.♗c3 bxc4 48.♗xc4 ♗f1+ should be drawn

44...♗e4 45.♗d4 ♗g6 46.♗e2 ♗g2 47.h4 ♗h3 48.h5+ ♗f7 49.c5 bxc5+ 50.bxc5 ♗e7 51.♗d3 ♗g4 52.♗c4 ♗xh5 53.♗xf5 ♗e2+ 54.♗d4 h5 55.cxd6+ cxd6 56.♗e4 h4

56...♗f1 57.♗f3 h4 58.c4 h3 59.♗c3=

57.♗h1 f5 58.♗c3 ♗f6 59.♗d2 ♗c4 60.♗e1 ♗e7 61.♗f2

½-½

Beare, Nick (1621) - Press, Shaun P (1951) [D00]

ACTJCL Sunday Summer Tournament Canberra AUS (3),
24.01.2021

1.d4 d5 2.♖c3 ♖f6 3.♗f4 a6 to stop any Nb5 ideas 4.e3 e6

Not a bad move, but I had intended to play c5 instead.

4...c5 5.dxc5 ♖c6 6.♖f3 ♗g4 7.h3 ♗xf3 8.♖xf3±

5.♗d3 c5 6.dxc5 ♖c6

6...♗xc5 7.♖f3=

7.♖a4 ♗xc5?!

7...♖d7 was a better way to win back the pawn

8.♖xc5 ♖a5+ 9.c3 ♖xc5 10.♖f3 ♖e7

As the idea is to force e5, this move makes sense

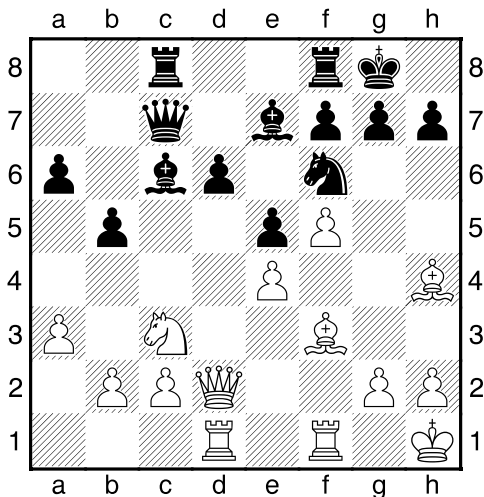
11.♖e5 ♖d7 12.♖xc6 bxc6 13.e4!

An excellent move, preventing Black from taking all of the centre.

13...e5 14.♙e3 0-0 15.0-0 ♘c5
 15...♗f6 16.♙g5 h6 17.♙xf6 ♜xf6 18.♞c1=
16.b4 ♗xd3
 16...♗e6?! 17.♞h5! d4 18.cxd4 exd4 19.♙d2±
17.♞xd3 ♞d8 18.♙b6 ♞d7
 Black's pieces are becoming increasingly disorganised.
19.f4 ♙b7?
 19...a5 was better. 20.♙c5 ♞d8 21.♞f3 ♙a6 22.♞fd1
 ♙c4=
20.♙c5 ♞e8 21.fxe5 ♞xe5 22.♞a1 ♞e6
 22...a5! 23.exd5 ♞xd5 24.♞xd5 ♞xd5 25.♞e7 ♙a6!=
23.exd5 ♞xd5 24.♞e2 with the threat of Rd1
24...f6 25.♞d1
 25.♞g4!+-
25...♞f7 26.♞xd7 ♞xd7 27.♞d1 ♞f7 28.♞e1 ♞d8
29.♞e7 ♞d7
 29...♞xc7 30.♞xc7 ♙c8 31.♙d4 ♙f5=
30.♞e8+ ♞xe8 31.♞xe8+ ♗f7 32.♞b8 ♗e6
 ½-½

Archer,Saffron (1709) - de Noskowski,Adrian (1813)
 [B84]

ACTJCL Sunday Summer Tournament Canberra AUS (3),
 24.01.2021
1.e4 c5 2.♗f3 d6 3.d4 cxd4 4.♗xd4 ♗f6 5.♗c3 a6
6.♙e3 e6 7.♙e2 ♙e7 8.♞d2 ♗c6 9.f4 ♞c7 10.0-0
0-0 11.♞ad1 ♞b8 12.♙f3 ♗xd4 13.♙xd4 e5 14.♙f2
 14.♙a7 ♞a8 15.♙c3 can be annoying for Black
14...b5 15.♗h1 ♙b7 16.a3 ♙c6 17.♙h4 with the idea
 of removing one of the defenders of the d5 square.
17...♞bc8 18.f5



18...a5
 Black can equalise with a long exchanging sequence that starts with 18...♗xc4 19.♗xc4 ♙xh4 20.♗xd6 ♞fd8 21.♙xc6 ♞xc6 22.♞b4 ♞a8 23.♞xh4 ♞xd6 24.♞xd6 ♞xd6 25.f6! gxf6 26.♞xf6 ♞xf6 27.♞xf6 ♞d8 28.g4 ♞d2=
19.♙xf6 ♙xf6 20.♞xd6 ♞xd6 21.♞xd6 winning a pawn, but Black has enough piece play to compensate
21...b4 22.axb4 axb4 23.♗d1 ♙b5
 23...♙e7 24.♞d2 ♙g5 25.♞d6 ♙e7 is a repetition.
24.♞f2 ♞fd8 25.♞xd8+ ♞xd8
 25...♙xd8=

26.♗e3 ♞d4 27.♗d5 ♙g5 28.g3 ♙c1 29.c3 bxc3
30.bxc3 ♞a4 31.♗g2 ♙d3 32.♗b4 ♙c4 33.♞c2
 33.♙c2 offering to exchange more pieces is a good plan here.
33...♙g5 34.h4 ♙e7 35.♞b2 h6 36.♗d5 ♙c5 37.♙e2
♙xe2 38.♞xe2 ♞a1 39.♗f3
 39.h5! leads to a "Good Knight" ending
39...h5 40.♞g2 ♞e1 41.g4 hxg4+ 42.♞xg4 ♗h7
43.♞g2
 ½-½

Pearce,Tim (1752) - Ho,Lachlan (1590) [D45]
 ACTJCL Sunday Summer Tournament Canberra AUS (3),
 24.01.2021

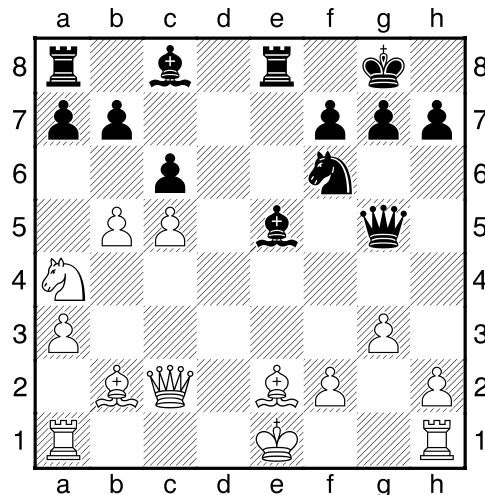
1.d4 d5 2.c4 c6 3.♗c3 ♗f6 4.e3 e6 5.♗f3 ♗bd7
6.♞c2 ♙b4 7.a3 ♙a5 8.b4 ♙c7 9.c5?!

There are a few openings where White pushes the c pawn to c5 with the intention of trying to create a passed pawn on the queenside. However this removes pressure on the d pawn and allows Black to fight back with a well timed e5 push.

9...0-0 10.b5 e5!
 10...cxb5 11.♗xb5 would make White happier.
11.dxe5?
 11.♙c2 exd4 12.exd4 ♞e8 is less aggressive, but better for White
11...♗xe5 12.♗xe5 ♙xe5 13.♙b2 ♞e8
 White is still two moves away from castling, which allows Black to open up lines by playing d4!
14.♙e2 d4 15.exd4

When behind in development, the best strategy is to keep the centre closed for as long as possible.

15.♞d1 ♗g4! (15...♞c7 16.exd4 ♙xh2 17.d5!)=
 16.exd4 ♙xh2 17.♗f1 ♞h4 18.♙xg4 ♙xg4 19.f3 ♙c6±
 was the safest line for White
15...♞xd4 16.♗a4
 16.♗d1 ♞f4 17.g3 ♞f5 18.♞xf5 ♙xf5 19.♙xc5 ♞xc5
 20.bxc6 ♞ae8! 21.♗c3 ♙c4 22.0-0 ♙xc6±
16...♞f4
 16...♞h4! 17.g3 (17.♙xe5 ♞xe5 18.0-0 ♙f5 19.♞d1
 ♞xe2! 20.♞xe2 ♞xa4+-) 17...♞h3 18.0-0-0 ♙f5 gives
 Black a strong attack.
17.g3 ♞g5



18.f4?

White thought he could take the piece and survive.

18.0-0 ♟f5 19.♟b3 ♟c6 20.♟c2 ♟xb2 21.♟xb2

18...♟xf4! 19.gxf4 ♟h4+ 20.♟d1 ♟xf4

20...♟d8+ 21.♟d3 (21.♟c1 ♟xf4+ 22.♟b1 ♟f5-+)

21...♟f5-+

21.♟xf6 ♟xf6

21...♟xe2!! 22.♟xe2 (22.♟xe2 ♟g4) 22...♟g4+ 23.♟c1 ♟c8+ leads to mate

22.♟b2 ♟f5 23.♟c1 ♟ad8+ 24.♟d3 ♟xd3 25.♟xd3 ♟xd3+ 26.♟c2 ♟c3+

0-1

Forace, Lee (1648) - Vels, Philip (1404) [B01]

ACTJCL Sunday Summer Tournament Canberra AUS (3),
24.01.2021

1.e4 d5 2.exd5 ♟xd5 3.♟c3 ♟d8 4.d4 ♟f5? 5.♟f3

The double attack on b7 and the bishop leaves Black in a difficult position.

5...♟c8 6.♟f4 ♟xc2??

6...♟f6 7.♟c4 ♟xc2 8.♟c1 is still good for White, but Black isn't losing by much.

7.♟c1

One of the many good moves in this position 7.♟d5 ♟f6 8.♟xc7+ ♟d8 9.♟xa8+

7...♟f5 8.♟b5+

8.♟d5 leads to the quickest win

8...c6 9.♟d5 ♟e6+ 10.♟e2 ♟d7

10...♟a6 11.♟xa6 ♟xd5 12.♟xb7 ♟xf3 13.gxf3 ♟d8

14.♟c7 leads to a win 'on material' for White

11.♟c7 ♟xa2 12.♟xa8 ♟a5+ 13.♟c3 ♟a6 14.♟xa6

14.♟d5+

14...bxa6 15.♟c7

and the Bishop on f5 is the next to go.

1-0

Sanchez, Hunter (609) - Tisserand, Nathalie (1632)

[A06]

ACTJCL Sunday Summer Tournament Canberra AUS (3),
24.01.2021

1.♟f3 d5 2.e3 c5 3.c4 d4!

An excellent space gaining move.

4.♟c2 ♟c6 5.a3 ♟g4 6.♟e2 ♟f6 7.0-0 e5 8.exd4??

Losing a piece.

8.h3 ♟h5 9.d3

8...e4 9.h3

9.♟e1 exf3 10.♟xf3+ ♟e7 is no better

9...exf3 10.♟xf3 ♟xf3 11.♟e1+ ♟e7 12.gxf3 ♟xd4

13.♟a4+ ♟d7 14.♟xe7+??

Surrendering the exchange is both unnecessary and losing. Black has little difficulty in winning a rook up

14...♟xe7 15.♟xd7+ ♟xd7 16.♟c3 ♟he8 17.♟a2

♟e1+ 18.♟g2 ♟b3 19.♟b1 ♟xd2 20.♟a1 ♟xc4

21.♟c3 ♟c6 22.♟b1 ♟d5 23.♟d2 ♟xb1 24.♟xb1

♟xb2 25.♟c3 ♟c4 26.♟xd5 ♟xd5 27.♟c3 ♟xa3

28.♟xg7 ♟g8 29.♟f1 ♟xg7 30.♟e2 c4 31.♟d2 ♟d4

32.♟c1 c3 33.♟d1 ♟d3 34.♟c1 ♟g1#

0-1

Karthik, Shriya (1213) - Kong, Dexuan (1455) [A50]

ACTJCL Sunday Summer Tournament Canberra AUS (3),
24.01.2021

1.♟f3 ♟c6 2.c4 ♟f6 3.d4 e6 4.e3 d5 5.♟bd2 ♟d6

6.♟e2 0-0 7.0-0 ♟a5? 8.c5 ♟e7 9.b4 ♟c6 10.b5

♟b8 11.♟b2 c6 12.a4 cxb5 13.axb5 a6 14.bxa6

bxa6 15.♟e5 ♟fd7 16.♟df3 f6 17.♟xd7

17.♟d3 With extra space it is sometimes better to keep pieces on the board, as your opponent has less squares to put theirs.

17...♟xd7 18.♟c2 ♟c7 19.♟fc1 ♟b8 20.♟d2 ♟c6

21.♟b3

21.♟c3 covering the square in front of the pawn was better.

21...a5 22.♟a4? Now Black equalises

22.♟a3 ♟d7 23.♟ca1

22...♟d7 23.♟b5 ♟b4

23...♟fb8! 24.♟xc6 ♟xc6 25.♟a3 a4 26.♟d2 solves all of Black's problems.

24.♟e2 ♟xb5 25.♟xb5 ♟fb8 26.♟e2 ♟c6 27.♟c3

♟b4 28.♟xb4 ♟xb4 29.♟a3 e5 30.g3 ♟c6 31.♟d3

a4 32.♟d2 e4 33.♟b1 ♟a5 34.♟c2 ♟b8?

34...♟d8 was needed to protect the d pawn

35.♟a2 ♟d8?

35...♟d8 36.♟xe4 looks good for White, but Black can play 36...♟xd4! 37.exd4 ♟e1+ 38.♟g2 ♟xc4+ 39.f3 to win back the pawn.

36.♟xe4 ♟h8 37.♟c3 ♟f8 38.♟xd5 ♟xd5 39.♟xd5

White is 2 pawns ahead and easily winning.

39...♟b1+ 40.♟c1 ♟xc1+ 41.♟xc1 ♟a5 42.♟b6 ♟g8

43.♟xa4 ♟f7 44.♟f1 ♟e8 45.♟e2 g6 46.♟d3 f5

47.f3 ♟h6 48.♟d2 ♟c6 49.♟c4 ♟d7 50.♟b6+ ♟c7

51.f4 ♟f8 52.d5 ♟d8 53.♟c3 ♟b7 54.♟e5+ ♟d8

55.c6 ♟d6+ 56.♟c5 ♟e4+ 57.♟b5 58.♟c4

♟xe5 59.fxe5 g5 60.♟b6 h5 61.c7+ ♟d7 62.e6+

♟c8 63.e7 ♟f6 64.♟d6+ ♟d7 65.c8♟+ ♟xd6

66.♟c6+

66.♟c6# was faster!

66...♟xe7 67.♟e6+ ♟d8 68.♟xf6+ ♟d7 69.♟e6+

♟d8 70.♟c6 f4 71.♟d7#

1-0

Cunningham, Campbell (1373) - Cheng, Larry (609)

[B21]

ACTJCL Sunday Summer Tournament Canberra AUS (3),
24.01.2021

1.e4 c5 2.d4 cxd4 3.c3 ♟c6 4.cxd4 e5 5.♟f3

5.dxe5 ♟xe5 6.♟f3 is another line that looks OK for White.

5...f6?

Weakening squares around the king is a recipe for a quick defeat.

5...exd4 6.♟xd4 ♟f6=

6.♟c3

Or 6.d5! ♟d4 (6...♟ce7 7.d6 ♟c6 8.♟c3 and Black will find it almost impossible to develop his pieces.)

7.♟xd4 exd4 8.♟xd4+-

6...♟b4 7.a3 ♟a5 8.b4 ♟b6 9.♟e3

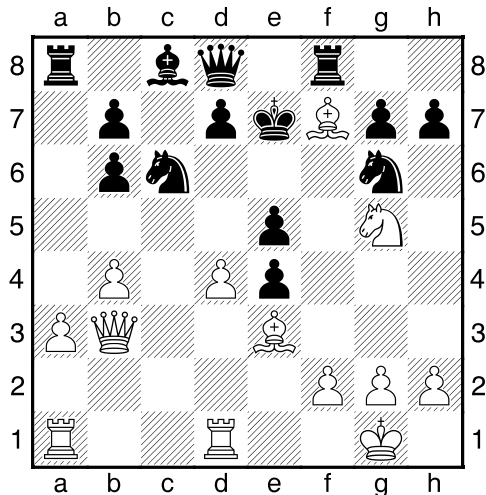
9.dxe5 ♟xe5 10.♟xe5 fxe5 11.♟h5+ ♟f8 12.♟xe5 is a familiar trick.

9...♟c7 10.♟d5! ♟d8 11.♟c4 ♟ge7 12.♟xb6 axb6

13.♟b3

13.dxe5! ♖xe5 14.♗xe5 fxc5 15.♞h5+ ♗g6 16.♙g5 ♞c7
17.♞c1 ♞b8 18.0-0+
**13...♞f8 14.0-0 ♗g6 15.♞fd1 f5 16.♗g5 fxe4
17.♙f7+ ♗e7**

White has a completely winning position here, but faced with so many choices, heads off down the wrong path.



18.♗e6?

18.d5 ♗d4 19.d6+ ♗xd6 20.♙xd4 ♗c7 (20...exd4
21.♞g3+! ♗e7 22.♞xd4 ♞xf7 23.♞xe4+ ♗f8
24.♗hx7+ ♗g8 25.♞xg6+-) 21.♙xg6 hxg6 22.♙xc5+
+-

18...dxe6 19.♙g5+ ♗xf7 20.♙xd8 ♞xd8

White has captured the Black Queen, but has given up 3 pieces to do so. As long as Black can find secure squares for each of his minor pieces he should no longer be losing.

21.dxe5 ♗gxe5 22.♞e3 ♙d7 23.♞xe4

23.b5! ♗e7 24.♞f4+ wins a piece

23...♗g6 24.♞e3 b5 25.♞b6 ♗ce5

25...♗ce7 was safer.

26.♞xb7 ♗e7 27.♞e4 ♗c4 28.♞d4

28.♞xd7+! ♗xd7 (28...♞xd7 29.♞xa8) 29.♞b7+ ♗c8
30.♞xb5+ ♗c7 31.♞xc4+-

28...e5 29.♞e1 ♗xa3?

29...♗f6 to try and keep everything defended was the right plan.

30.f4 ♗c2 31.♞c5+

And after winning this piece, the White queen becomes too strong for Black.

31...♗e6 32.♞xc2 ♗xf4 33.♞e4 ♞xa1 34.♞xa1 ♗g6

35.♞d1 ♗f6 36.♞b7 ♗e7 37.♞c7 ♗e8 38.♗f2 h5

39.g3 ♗e7 40.♗e3 ♗e8 41.♞d6 ♗e7 42.♗e4 ♗c6

43.♞xc6 ♙xc6+ 44.♞xc6+ ♗e7 45.♗xe5 ♞d6

46.♞c5 g5 47.♞xd6+ ♗f7 48.♗f5 g4 49.♗g5 h4

50.gxh4 g3 51.hxg3 ♗g8 52.♗g6 ♗h8 53.♞f8#

1-0

Albert,Max (1200) - Yang,Minchen (1039) [B34]

ACTJCL Sunday Summer Tournament Canberra AUS (3),
24.01.2021

**1.e4 c5 2.♗f3 g6 3.d4 cxd4 4.♗xd4 ♗c6 5.♗c3
♙g7 6.♙e3 ♗f6 7.♙e2**

f3 inviting a transposition into main lines of the Dragon is less good as Black can play d5 in one go.

7...0-0 8.♞d2 ♞e8 9.g4 ♞b6 10.♗xc6

10.♗b3! gains an important tempo 10...♞c7 11.g5 ♗h5
12.♙xh5 gxh5 13.0-0-0 with an advantage due to Black's ruined pawn structure.

10...♞xc6 11.♙b5 ♞d6

11...♗xc4 was the tactical shot here. 12.♙xc6 ♗xd2
13.♙d5 ♙xc3 14.bxc3 e6 15.♗xd2 exd5 although the extra pawn may not count for much.

12.f3

12.♞xd6 exd6 13.f3 d5 14.0-0-0 seemed a lot more sensible. 14...dxe4 15.g5! ♗h5 16.♗xe4±

12...♞xd2+ 13.♗xd2 a6 14.♙d3 b5 15.e5 b4

16.exf6 bxc3+ 17.bxc3 ♙xf6 18.♞ab1 d5 19.h4 e5

20.♞b6 ♞e6 21.g5 ♞xb6 22.♙xb6 ♙g7 23.♞e1 ♙e6

24.a4 f6 25.a5 fxg5 26.hxg5 ♙f5 27.♙f1 A strange retreat

27.c4 ♙xd3 28.cxd3 dxc4 29.dxc4 leads to a favourable ending for White.

27...h6 28.♙c7 e4 29.gxh6 ♙xh6+ 30.f4 g5! 31.♗e3 ♞c8 32.fxg5?

32.♙d6 gxf4+ 33.♙xf4 ♙g7 34.♙xa6 ♞xc3+ 35.♗d2±

32...♙xg5+ 33.♙f4 ♙xf4+?

33...♞xc3+? 34.♗d4 ♙f6+ 35.♗xd5 ♞xc2 36.♙xa6 ♞a2=;

33...♙f6! 34.♙xa6 ♞xc3+ 35.♗d2 ♞c5 36.♞b1 ♙c3+

37.♗d1 ♞xa5±

34.♗xf4 ♙g6 35.♙xa6 ♞a8 36.♙e2 ♞xa5

The ending is completely equal, although another 20 moves were played until a draw was agreed to.

37.♞g1 ♗f7 38.♗e3 ♞a2 39.♞c1 ♗e6 40.♗d4 e3

41.♙d3 ♙xd3 42.♗xd3 ♞a3 43.♞e1 ♗d6 44.♞xe3

♞a4 45.♞e1 ♗c5 46.♞b1 ♞h4 47.♞b4 ♞h3+ 48.♗d2

♞h2+ 49.♗c1 ♞h1+ 50.♗b2 ♞d1 51.♞b8 d4

52.♞c8+ ♗b6 53.c4 ♗b7 54.♞c5 ♗b6 55.♞d5 ♗c6

56.♗a2 ♞d2 57.♗b3 ♞d1 58.c3 d3

½-½

Liang,Joshua (1022) - Banerjea,Siddharth (1063)

[C54]

ACTJCL Sunday Summer Tournament Canberra AUS (3),
24.01.2021

1.e4 e5 2.♗f3 ♗c6 3.♙c4 ♙c5 4.c3 ♗f6 5.d4 exd4

6.cxd4 ♙b4+ 7.♗c3 ♗xe4 8.0-0 ♙xc3!

8...♗xc3 9.bxc3 ♙xc3 has lead to a number of

spectacular wins for White 10.♞b3 ♙xa1? 11.♙xf7+ ♗f8

12.♙g5 ♗e7 13.♗e5 (13.♞e1+-) 13...♙xd4 14.♙g6!! d5

15.♞f3+ ♙f5 16.♙xf5 ♙xe5 17.♙c6+ ♗e8 18.♞f7# is

just one example

9.bxc3

9.d5 is White's best attempt to get something for the

pawn but after 9...♙f6 10.♞e1 ♗e7 11.♞xe4 d6 12.♙g5

♙xg5 13.♗xg5 h6 White does not get enough. This line

is the main reason why the Greco Gambit is now

considered losing for White!

9...d5! 10.♙b5 0-0

10...♗xc3?? Black is a pawn up, so there is no need to

grab a second one. 11.♙xc6+ bxc6 12.♞c2+-

11.♙xc6 bxc6 12.♞d3 ♞b8 13.♗e5 ♞d6 14.c4 c5

15.♗f3?

15.f3! cxd4 16.♞xd4 ♗f6 17.♞e1 dxc4 18.♞xd6 cxd6

19.♗xc4 leaves Black a pawn up, but defending the d

pawn may prove to be difficult.

15...♙a6! White missed this idea

16.dxc5 ♗xc5 17.♞xd5 ♞xd5 18.cxd5 ♙xf1

19.♗xf1 Black is an exchange ahead.

19...f8 20.e3 e4 21.xa7 b7 22.d4 b5
 23.c1
 23.a4 xd5 24.c3 a8+-
 23...xd5 24.xc7 d2+
 Black missed a tactic here 24...xd4! 25.dxd4 d2+
 26.g1 c1#
 25.dxd2 xd4 26.e4?? Worried about mate threats,
 White drops the knight.
 26.c2 makes the win harder for Black.
 26...dxe4 27.g3 h6 28.a7 e1+ 29.g2 a1
 30.a4 e4 31.a8+ h7 32.a5 ea4 33.a6 xa6
 34.xa6 xa6 35.f4 g5 36.fg5 hxg5 37.h3 f5
 38.g2 g6 39.h3 g4+ 40.g2 a2+ 41.g1
 g5 42.h1 f4 43.gxf4+ xf4 44.g1 f3 45.h1
 a1#
 0-1

Dunn,Paul (1396) - Mathur,Rohitansh (1027) [D02]
 ACTJCL Sunday Summer Tournament Canberra AUS (3),
 24.01.2021

1.d4 d5 2.f3 f6 3.g3 c6
 In 1.d4 openings, this knight normally waits until c5 is
 played before moving to c6. Nonetheless, this is a known
 variation in the catalan

4.c4 e6 5.c2?!
 The wrong square for the queen.

5.g2 dxc4 6.a4 b4+ 7.d2! is common opening
 theory
 5...b4
 Normally this kind of move would not be recommended,
 as it is a non developing move. But if followed up
 correctly, it is quite strong.

6.b3 e7
 6...dxc4! is better here 7.xc4 d5 8.xd5 exd5 9.d3
 d6 and Black has taken the lead in development.

7.g2 c5 8.0-0 0-0 9.cxd5 exd5 10.a3 c4 11.d1
 c6 12.d3 g4 13.e5 xe5?
 "chess isn't checkers". Just because you can capture
 doesn't mean you should.

13...f5=
 14.dxe5 h5
 14...d7 15.xd5 e6 16.xb7+-
 15.xd5 xd5 16.d5 ab8 17.e3 b6
 18.xc4+-

White has a two pawn advantage.
 18...c5 19.xc5 bxc5 20.b3 h3 21.f8d1 fe8
 22.f4 ed8 23.e4 h6 24.d6 xd6 25.dxd6 e6
 26.xe6 fe6 27.b1 g5 28.e3 a5 29.d4 a4
 30.f2

30.b4 cxb4 31.xb4 xb4 32.axb4 was the winning plan,
 but White may have been spooked by the passed a pawn.
 30...axb3 31.e4?! gxf4 32.g4 dg7 33.h4 h5 34.g5
 e8 35.f3 c7 36.a4

White had been moving towards victory, but the last few
 moves were inexact. 36.fxf4!]
 36...d5??

But having got back into the game, Black chooses the
 wrong drawing method. 36...g7 37.d2 b2 38.fxf4
 c4! 39.dxc4 b4! suddenly makes it very difficult for
 White to win. 40.d3 d6 41.d2 xa4 42.xb2 d3
 43.f3 xe4 and with fewer pawns on the board, the
 easier it is for Black to draw.
 37.exd5 exd5 38.d6 c4

The army of pawns may look tempting, but the extra
 piece is enough to hold them at bay.

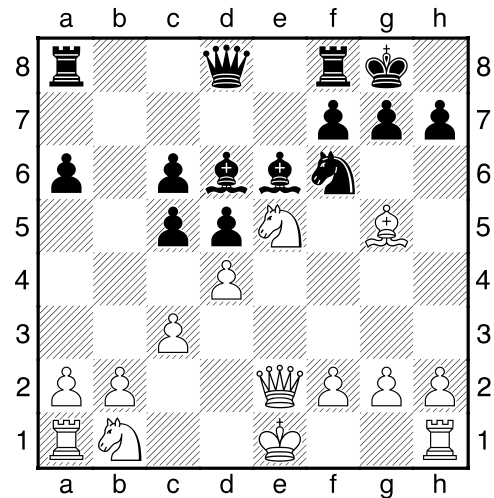
39.b5 a8 40.c7
 40.c6!
 40...xa4 41.dxd5 a2 42.d4 a4 43.d5 a2
 44.fxf4 a8 45.d6 c3 46.xb3 c2 47.c3 a2
 48.d5 g7 49.f5 f7 50.d4 c1 51.xc1
 f2+ 52.e4 e2+ 53.d4 d2+ 54.d3 a2
 55.c7+ e6 56.d5+ f5 57.e6 d2+ 58.e3
 d5 59.e7 e5+ 60.f3 g6 61.f4 f5+ 62.e4
 xc5 63.xc5 f7 64.f5+ xe7 65.g6 d7 66.g7
 e7 67.g8 68.g6+ e7 69.f7+ e8
 70.g8#
 1-0

Extross,Eshaan (1294) - Huang,Charles (902) [C01]
 ACTJCL Sunday Summer Tournament Canberra AUS (3),
 24.01.2021

1.e4 e6 2.d4 d5 3.exd5
 Previously considered boring, this has become quite a
 popular anti-French system in recent years. White can
 generate a strong attack if Black play passively.

3...exd5 4.d3 f6 5.g5 c5 6.e2+ e6 7.b5+
 c6 8.f3 a6 9.xc6+ bxc6 10.c3
 10.d3 is probably better here.
 10...d6 11.e5 0-0!

An excellent move. Black is focusing on completing his
 development before starting an attack.



12.dxc6
 12.f6 xf6 13.dxc6? fe8 14.d5 cxd4 15.cxd4 d7
 16.0-0 b5-; 12.0-0 cxd4 13.dxc6 c7 14.f6 dxc3!
 15.dxc3 xc6 16.d4 was the path to equality. Black
 has the bishop pair, and the White kingside lacks
 defenders. However the isolated queens pawn is a definite
 weakness, and if White can force Black to defend it, then
 the kingside attack may be over before it starts.

12...c7 13.d5
 13.f6 xc6 14.e5 fe8 15.0-0 f5+
 13...e4
 13...cxd4 14.cxd4 e4 is similar to the game, but has the
 added benefit of exposing the king to checks from the
 queenside.
 14.f3 dg5 15.dg5 fe8 16.d1

16.0-0 ♖xh2+ 17.♔h1 ♕f4 was White last chance to stay in the game

16...cxd4 17.cxd4 ♕f4 with the threat of mate on c1

17...♕f5! 18.♖d2 ♕f4! is the more direct way to execute this plan. 19.♖c3 ♖c7! threatening mate, attacking the knight on g5, and keeping up the attack

18.♗c3 ♕xg5 19.h4 ♕f6 20.♖d2 ♖c4

Black is ahead a piece and has the king trapped in the centre. White defends the best that he can, but the final result is now clear.

21.♗e2 ♕f5 22.♖c1 ♖d3 23.♖xd3 ♕xd3 24.♗f4 ♕c4 25.b3 ♕b5 26.♗xd5 ♖ad8 27.♗xf6+ gxf6 28.♖e1 ♖xd4+ 29.♔c2 ♖xe1 30.♖xe1 ♖xh4 31.♖e3 ♖h2 32.♖f3 ♖xg2 33.♖xf6 ♔g7 34.♖f3 ♕c6 35.♖g3+ ♖xg3 36.fxg3 ♔f6 37.♔d3 ♔f5 38.♔d4 ♔g4 39.♔c5 ♕b5 40.a4 ♕f1 41.b4 ♔xg3 42.a5 h5 43.b5 ♕xb5 44.♔d4 h4 45.♔d5 h3 46.♔c5 h2 47.♔b6 h1 ♖ 48.♔a7 f5 49.♔b6 ♖c6+ 50.♔a7 ♕c4 51.♔b8 ♕e6 52.♔a7 ♕c8 53.♔b8 ♖b7#

0-1